

PERÜCKEN · WIGS · PERRUQUES · PELUCAS · PARRUCCHE

# Belle Madame<sup>®</sup>

HAIR COLLECTION



SMILLA HI SF  
*Cool-Danish-Blond-Root*

by DENING HAIR 

# SHORT STYLES



EBBA MEDIUM SF  
*Fire-Mix*

EBBA MEDIUM SF  
*Chocolate/Cream-Root*



## EBBA MEDIUM SF

●●○○○○ < M

SUPER-FRONT

*Mono-Wirbel / Mono-Crown*

Dark-Red-Mix



# WANJA SF

●●○○○○◀ S/M

SUPER-FRONT

*Mono-Wirbel / Mono-Crown*

Honey-Mix-Root



# COSMA MONO HI SF

●●●○○○◀ M

SUPER-FRONT

*High-Heat-Fiber*

Salt & Pepper



# LIGHT MONO SF

●●●○○○◀ S

SUPER-FRONT

Champagne-Root




# SVEA SF


●●○○○○◀ S/M

SUPER-FRONT

*Mono-Wirbel / Mono-Crown*



FENJA MONO SF  
60-W/22



FENJA MONO SF  
Dark-Ash-Blond-Mix

# FENJA MONO SF

●●●●● < S

SUPER-FRONT

Salt & Pepper



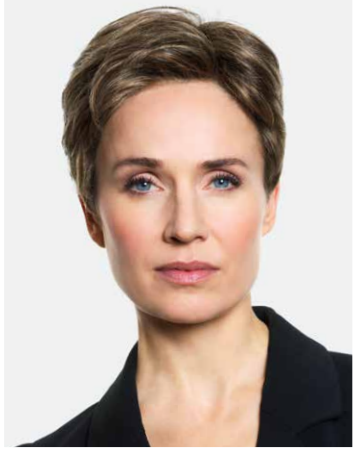
IDA SF

●●●○○○ < S

SUPER-FRONT

*Mono-Scheitel / Mono-Parting*

Dark-Ash-Blond-Mix



MIKA SF+

●●●○○○ < M

SUPER-FRONT PLUS

*Mono-Scheitel / Mono-Parting*

*Super-Front von Tempel zu Tempel  
PU an Tempeln*

*Super-Front from temple-to-temple  
PU on temples*

Sandy-Blond-Root



SENTA MONO SF

●●●○○○ < M

SUPER-FRONT

Chocolate-Mix



DORA SF

●●○○○○ < S

SUPER-FRONT

*Mono-Wirbel / Mono-Crown*

SHORT STYLES



ANOUK SF  
*Sand-Grey-Mix*



ANOUK SF  
*Chocolate/Cream-Root*

# ANOUK SF

●●●○○○ < M

**SUPER-FRONT**

*Mono-Scheitel / Mono-Parting*

Chocolate/Cream-Root



## RUMBA SF

●○○○○○◀ **M**

SUPER-FRONT

Rusty-Red



## TILDA SOFT SF

●●●●●○◀ **S/M**

SUPER-FRONT

*Handgeknüpft mit Mono-Scheitel*  
*Hand-tied with Mono-Parting*

Chocolate-Mix



## ROMY MONO HI SSF

●●●●●○◀ **M**

SOFT-SUPER-FRONT

*High-Heat-Fiber*

Snow-Blond-Root



## SIRI MONO SF

●●●●●○◀ **M**

SUPER-FRONT

SHORT STYLES

# BOB STYLES



KIRA MONO SF+  
Chocolate-Mix

KIRA MONO SF+

●●●●○ < M

SUPER-FRONT PLUS

*Super-Front von Tempel zu Tempel*

*Super-Front from temple-to-temple*



Swedish-Blond-Root



## CARLOTTA SF

●●●○○○ < M

SUPER-FRONT

*Mono-Scheitel / Mono-Parting*

Caramel-Root



## MARIETTA MONO SF

●●●●●● < S

SUPER-FRONT



Champagne-Ash-Root

## JILL MONO SF

●●●●●● < M

SUPER-FRONT



Dark-Grey-Root

## ELITE MONO SF+

●●●●●● < S/M

SUPER-FRONT PLUS

*Super-Front von Tempel zu Tempel  
Super-Front from temple-to-temple*

# LONG HAIR STYLES



KIM SF  
*Chocolate-Mix*



KIM SF  
*Cool-  
Danish-  
Blond-  
Root*

## KIM SF

●●●○○○ < S/M

SUPER-FRONT

*Mono-Mittel-Scheitel / Mono-Middle-Parting*

Butter-Scotch



Chocolate/Cream-Balayage



## SELINA SF

●●●○○○ < **M**

SUPER-FRONT

*Mono-Scheitel / Mono-Parting*

## TABEA HI SF

●●○○○○ < **S/M**

SUPER-FRONT

*Mono-Wirbel / Mono-Crown  
High-Heat-Fiber*

Rusty-Red



Medium-Blond/Danish-Blond-Ombre



## SPIRIT MONO SF

●●●○○○ < **M**

SUPER-FRONT

## GINA SF

●●●○○○ < **S/M**

SUPER-FRONT

*Mono-Scheitel / Mono-Parting*

# BelleMadame®

HAIR COLLECTION

by DENING HAIR

KIM SF  
*Chocolate-Mix*

 [www.dening.de](http://www.dening.de)

© 06.2024 Dening Hair GmbH, Hamburg